

This document contains key information you should know about Series A (Series A) units of BMO Global Strategic Bond Fund. You can find more detailed information in the simplified prospectus offering this series of units of the fund. Ask your adviser for a copy, contact the manager, BMO Investments Inc., at 1-800-665-7700 or mutualfunds@bmo.com or visit www.bmo.com/mutualfunds.

Quick facts

Date fund created:	(Series A) November 27, 2000	Portfolio manager(s):	PIMCO Canada Corp.
Total value on March 5, 2012:	\$804.1 Million	Distributions:	Distribution monthly, comprised of any income, capital gains earned or return of capital.
Management expense ratio (MER):	2.23%	Minimum investment:	\$500 initial, \$50 additional

What does the fund invest in?

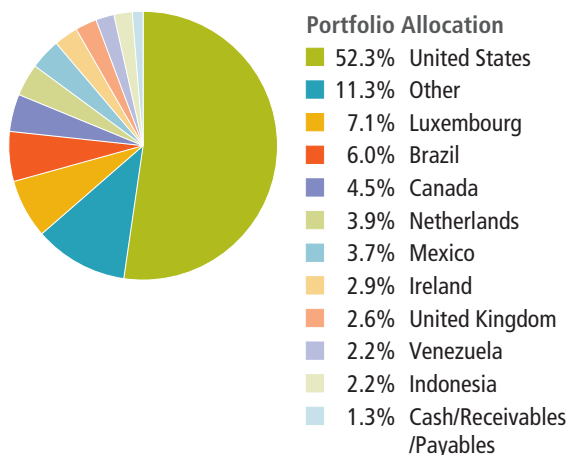
This fund's objective is to provide a fixed monthly distribution and capital appreciation potential by investing primarily in debt instruments issued by governments and corporations from around the world.

The charts below provide you with a snapshot of the fund's investments on March 5, 2012. The fund's investments will change.

Top 10 investments (March 5, 2012)

1. Province of Quebec, Bonds, 5.000% Dec 1, 2041
2. United States Government, Treasury Bills, 0.078% May 17, 2012
3. Petroleos de Venezuela S.A., Senior, Unsecured, Notes, Callable, 5.375% Apr 12, 2027
4. Brazil Notas do Tesouro Nacional, Series F, Notes, Unsubordinated, 10.000% Jan 1, 2017
5. Cash/Receivables /Payables
6. Fannie Mae, TBA, 4.000, Apr 13, 2042
7. New York City Municipal Water Finance Authority, Revenue Bonds, Utilities Revenue, Callable, 5.000% Jun 15, 2043
8. Fannie Mae, Unsecured, Notes, 0.625% Oct 30, 2014
9. Freddie Mac, Unsecured, Notes, 0.625% Dec 29, 2014
10. Russian Federation, Series 144A, Senior, Secured, Unsubordinated, Multi-Step Coupon, Sinking Funds, 7.500% Mar 31, 2030

Investment mix (March 5, 2012)



Total investments 462

The top 10 investments make up 15.5% of the fund.

How has the fund performed?

This section tells you how this series of the fund has performed over the past 10 years. Returns are after expenses have been deducted. These expenses reduce the series' returns.

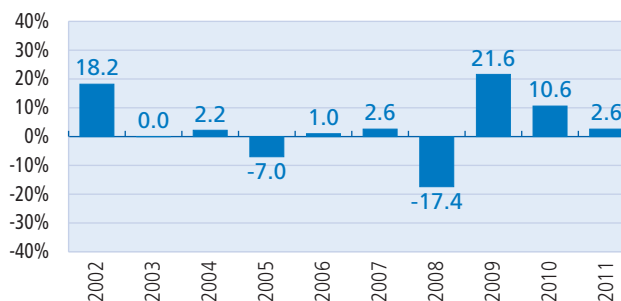
It's important to note that this doesn't tell you how the series will perform in the future. Also, your actual after-tax return will depend on your personal tax situation.

Average return

As at February 29, 2012, a person who invested \$1,000 in this series of the fund 10 years ago now has \$1,384. This works out to an annual compound return of 3.3%.

Year-by-year returns

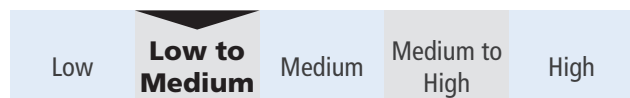
This chart shows how the series has performed in each of the past 10 completed calendar years. The series dropped in value in 2 of the 10 years.



How risky is it?

When you invest in a fund, the value of your investment can go down as well as up. BMO Investments Inc. has rated this fund's risk as Low to Medium.

For a description of the specific risks of this fund, see the simplified prospectus offering this series of units of the fund.



Are there any guarantees?

Like most mutual funds, this fund doesn't have any guarantees. You may not get back the amount of money you invest.

Who is this fund for?

Consider this fund if:

- you want regular monthly cash flow with the potential for capital gains primarily through investments in non-investment grade bonds from around the world
- you are comfortable with low to medium investment risk (i.e. you are willing to accept some fluctuations in the market value of your investment)
- you plan to hold this investment for the medium to long term
- it is held in non-registered accounts because it's designed to pay out regular monthly income. Distributions paid on funds you hold in a BMO registered plan must be reinvested in the fund.

Before you invest in any fund, you should consider how it would work with your other investments and your tolerance for risk.

A word about tax

Depending on the tax rules and tax rates that apply to you and the fund, you may have to pay tax on your portion of the fund's earnings and gains, whether paid out to you in cash or reinvested in the fund. Also, you may have to pay tax on any gain you realize when you redeem or sell your investment in the fund. However, if you hold your investment in a registered account such as a Registered Retirement Savings Plan or a Tax-Free Savings Account, generally you will not have to pay tax on earnings or gains that are held in the registered account.

How much does it cost?

The following section describes the fees and expenses you could pay to buy, own and sell Series A units of the fund.

The fund has other series of units. The fees and expenses are different for each series. You should ask about other series of units that may be suitable for you.

1. Sales charges

You pay no sales or redemption charges if you buy, redeem or switch Series A units of the fund through BMO Investments Inc.

2. Fund expenses

You don't pay these expenses directly. They affect you because they reduce the returns of this series of the fund.

As of September 30, 2011, the Series A expenses of the fund were 2.23% of its value. This equals \$22 for every \$1,000 invested.

Annual rate (as a % of the series' value)

Management expense ratio (MER)

This is the total of the management fee and operating expenses for Series A units of the fund.

2.23%

Trading expense ratio (TER)

These are the fund's trading costs.

—

Fund expenses

2.23%

Trailing commission

BMO Investments Inc. pays your dealer (including your discount broker) a trailing commission for as long as you own the fund. It is for the services and advice about the fund your dealer provides to you. Your dealer may pay part of the trailing commission to your adviser.

The trailing commission is paid out of the management fee. The rate depends on the sales charge options available:

No load trailing commission - up to 0.75% of the value of your investment each year. This equals up to \$8 each year for every \$1,000 invested.

3. Other fees

You may have to pay other fees when you buy, hold, sell or switch units of the fund.

Fee	What you pay
Short-term trading fee	Up to 2% of the amount that you redeem or switch if you buy or switch and then redeem or switch units of the fund within 30 days of purchasing or switching them. This penalty will be paid directly to the fund.
Switch fee	None. You may have to pay sales charges, switch fees and redemption charges if you invest through a registered broker or dealer other than BMO Investments Inc.

What if I change my mind?

Under securities law in some provinces and territories, you have the right to:

- withdraw from an agreement to buy mutual fund units or shares within two business days after you receive a simplified prospectus, or
- cancel your purchase within 48 hours after you receive confirmation of the purchase.

In some provinces and territories, you also have the right to cancel a purchase, or in some jurisdictions, claim damages, if the simplified prospectus, annual information form or financial statements contain a misrepresentation. You must act within the time limit set by the securities law in your province or territory.

For more information, see the securities law of your province or territory or ask a lawyer.

For more information

Contact BMO Investments Inc. or your adviser for a copy of the simplified prospectus offering this series of units of the fund and other disclosure documents. These documents and the Fund Facts make up the fund's legal documents.

BMO Investments Inc.
77 King Street West, Suite 4200
Toronto, Ontario
M5K 1J5

Toll Free 1-800-665-7700
www.bmo.com/mutualfunds
Email: mutualfunds@bmo.com